

## Luminaire Photograph



Light Output Ratio:	58.3%	
Luminaire Power:	10.31 W	
SHR Nominal:	0.75	Calculated using the TM5
SHR Maximum:	0.75	fine grid method.

C Range: 0 - 360DEG  
C Interval: 30.0DEG  
Test Speed: HIGH  
Temperature: 25.3 °C  
Operators: zoe  
Test Date: 2023-11-16

Range: 0 - 180DEG  
Interval: 1.0DEG  
Test System: EVERFINE GO-SPEX500\_V1 SYSTEM V2.00.461  
Humidity: 65.0%  
Test Distance: 3.160m [K=1.0000]  
Remarks: LAMP: BXR-V-DR-1830G-0600-B-23 Ra: 90  
LENS: PM-1103C 50R+DIFFUSER  
DRIVER: 9290 028 088 250mA  
30minutes warm-up

## LUMINOUS INTENSITY DISTRIBUTION DIAGRAM

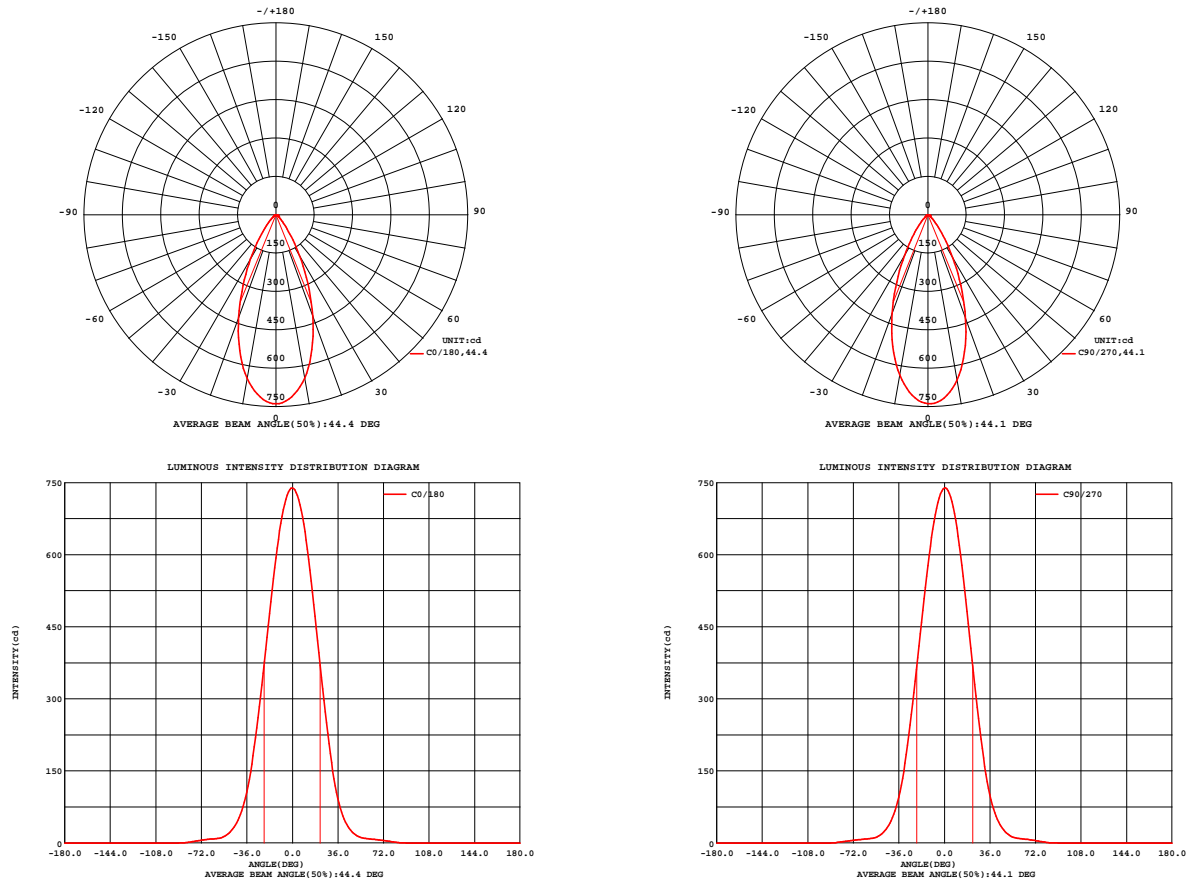


Fig. C0/C180

Fig. C90/C270

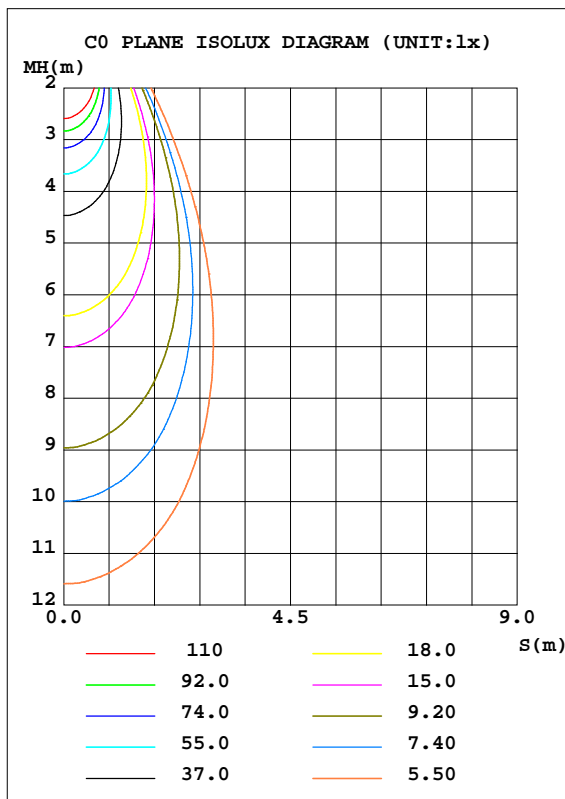
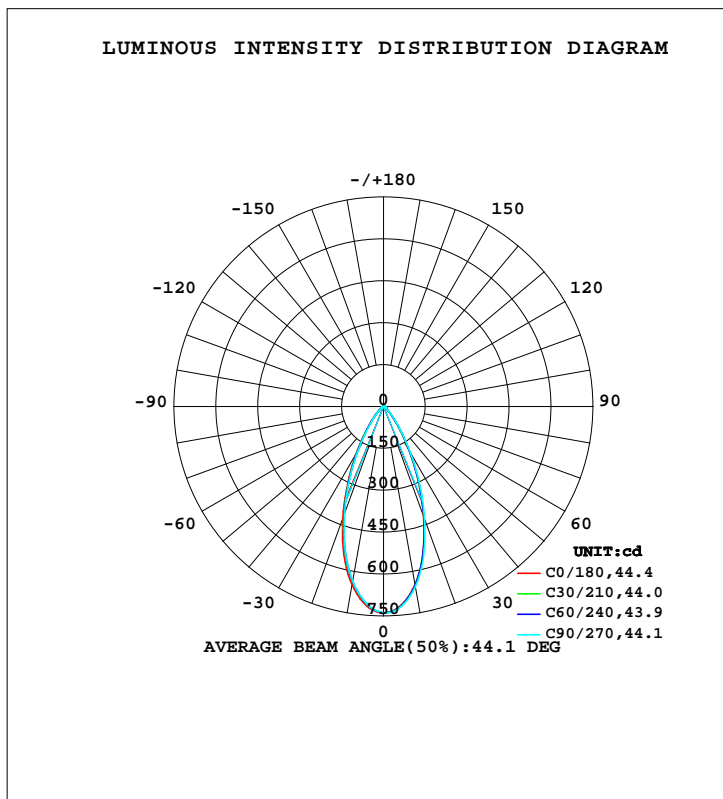
C Range: 0 - 360DEG  
C Interval: 30.0DEG  
Test Speed: HIGH  
Temperature: 25.3 °C  
Operators: zoe  
Test Date: 2023-11-16

Range: 0 - 180DEG  
Interval: 1.0DEG  
Test System: EVERFINE GO-SPEX500\_V1 SYSTEM V2.00.461  
Humidity: 65.0%  
Test Distance: 3.160m [K=1.0000]  
Remarks: LAMP: BXR-V-DR-1830G-0600-B-23 Ra: 90  
LENS: PM-1103C 50R+DIFFUSER  
DRIVER: 9290 028 088 250mA  
30minutes warm-up

## LUMINAIRE PHOTOMETRIC TEST REPORT

Test:U:220.25V I:0.0487A P:10.315W PF:0.9587 Freq:49.99Hz Lamp Flux:814.298x1 lm		
NAME: 2218.511-ACOT-97-DW	TYPE:	WEIGHT:
SPEC.: 3000K	DIM.:	SERIAL No.: 2311161341
MFR.: RISE	SUR.: 0.001589625m2	Shielding Angle:

DATA OF LAMP		PHOTOMETRIC DATA Eff: 45.99 lm/W			
MODEL	Bridgelux	Imax(cd)	738.8	S/MH(C0/180)	0.71
NOMINAL POWER(W)	10	LOR(%)	58.3	S/MH(C90/270)	0.69
RATED VOLTAGE(V)	220	TOTAL FLUX(lm)	474.34	UP,DN(C0-180)	0.0,29.4
NOMINAL FLUX(lm)	814.298	CIE CLASS	DIRECT	UP,DN(C180-360)	0.0,28.8
LAMPS INSIDE	1	up(%)	0.0	CIBSE SHR NOM	0.75
TEST VOLTAGE(V)	220	down(%)	58.3	CIBSE SHR MAX	0.75



C Range: 0 - 360DEG  
C Interval: 30.0DEG  
Test Speed: HIGH  
Temperature:25.3℃  
Operators:zoe  
Test Date:2023-11-16

Range: 0 - 180DEG  
Interval: 1.0DEG  
Test System:EVERFINE GO-SPEX500\_V1 SYSTEM V2.00.461  
Humidity:65.0%  
Test Distance:3.160m [K=1.0000]  
Remarks: LAMP:BXRV-DR-1830G-0600-B-23 Ra:90  
LENS:PM-1103C 50R+DIFFUSER  
DRIVER:9290 028 088 250mA  
30minutes warm-up

## ZONAL FLUX DIAGRAM

### ZONAL FLUX DIAGRAM:

	C0	C45	C90	C135	C180	C225	C270	C315		zone	total	%lum,lamp
10	647.9	650.7	655.4	657.7	649.8	637.7	635.7	641.1	0- 10	66.01	66.01	13.9,8.11
20	420.7	422.8	430.8	437.0	427.7	414.4	410.1	414.0	10- 20	150.0	216.0	45.5,26.5
30	186.2	188.9	196.6	202.6	200.2	191.1	184.5	182.2	20- 30	136.4	352.4	74.3,43.3
40	56.52	58.59	62.64	66.25	66.98	63.47	59.40	55.76	30- 40	71.35	423.7	89.3,52
50	16.73	17.56	18.88	19.98	20.58	19.26	17.50	16.52	40- 50	27.03	450.8	95,55.4
60	8.712	8.804	8.975	9.181	9.140	8.869	8.702	8.660	50- 60	10.85	461.6	97.3,56.7
70	5.878	5.793	5.792	6.174	6.498	6.338	6.060	5.905	60- 70	7.529	469.1	98.9,57.6
80	2.191	1.754	1.602	1.920	2.401	2.740	2.823	2.597	70- 80	4.385	473.5	99.8,58.2
90	0	0	0	0	0	0	0	0	80- 90	0.8019	474.3	100,58.3
100	0	0	0	0	0	0	0	0	90-100	0	474.3	100,58.3
110	0	0	0	0	0	0	0	0	100-110	0	474.3	100,58.3
120	0	0	0	0	0	0	0	0	110-120	0	474.3	100,58.3
130	0	0	0	0	0	0	0	0	120-130	0	474.3	100,58.3
140	0	0	0	0	0	0	0	0	130-140	0	474.3	100,58.3
150	0	0	0	0	0	0	0	0	140-150	0	474.3	100,58.3
160	0	0	0	0	0	0	0	0	150-160	0	474.3	100,58.3
170	0	0	0	0	0	0	0	0	160-170	0	474.3	100,58.3
180	0	0	0	0	0	0	0	0	170-180	0	474.3	100,58.3
DEG	LUMINOUS INTENSITY:cd									UNIT:lm		

C Range: 0 - 360DEG  
C Interval: 30.0DEG  
Test Speed: HIGH  
Temperature:25.3℃  
Operators:zoe  
Test Date:2023-11-16

Range: 0 - 180DEG  
Interval: 1.0DEG  
Test System:EVERFINE GO-SPEX500\_V1 SYSTEM V2.00.461  
Humidity:65.0%  
Test Distance:3.160m [K=1.0000]  
Remarks: LAMP:BXRV-DR-1830G-0600-B-23 Ra:90  
LENS:PM-1103C 50R+DIFFUSER  
DRIVER:9290 028 088 250mA  
30minutes warm-up

### LUMINANCE LIMITATION CURVES

Test:U:220.25V I:0.0487A P:10.315W PF:0.9587 Freq:49.99Hz  
Lamp Flux:814.298x1 lm

NAME: 2218.511-ACOT-97-DW

TYPE:

WEIGHT:

SPEC.: 3000K

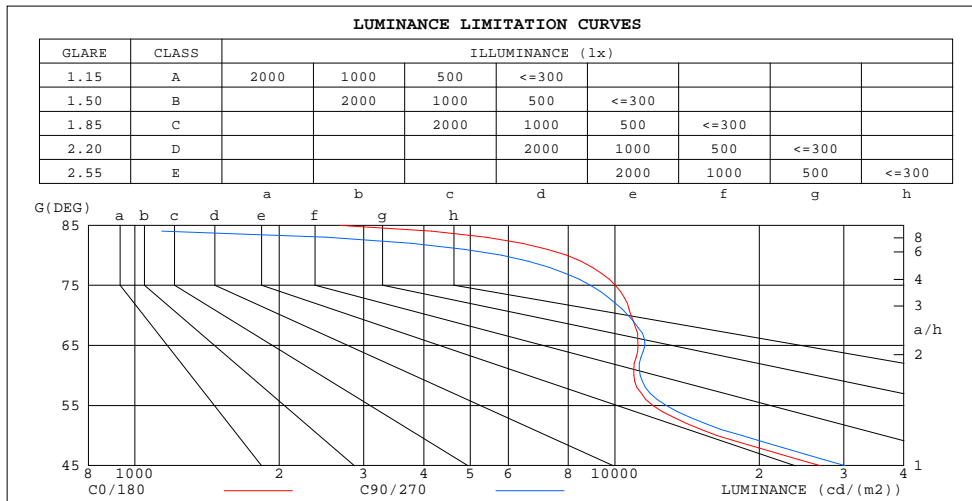
DIM.:

SERIAL No.: 2311161341

MFR.: RISE

SUR.: 0.001589625m2

Shielding Angle:



LUMINANCE cd/(m2)		
G(180)	C0/180	C90/270
85	2672	299
80	7936	5802
75	10017	8898
70	10808	10652
65	11169	11557
60	10957	11291
55	12009	12803
50	16364	18473
45	26795	30245

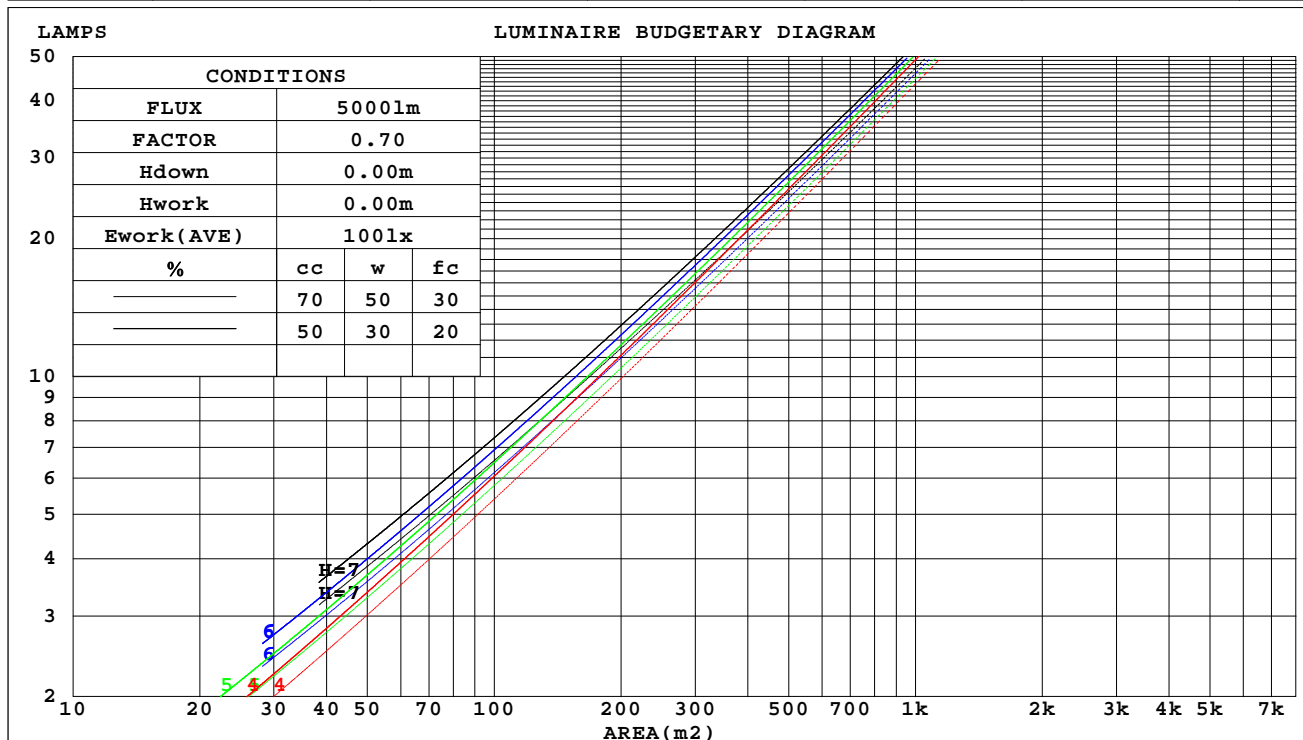
C Range: 0 - 360DEG  
C Interval: 30.0DEG  
Test Speed: HIGH  
Temperature:25.3℃  
Operators:zoe  
Test Date:2023-11-16

Range: 0 - 180DEG  
Interval: 1.0DEG  
Test System:EVERFINE GO-SPEX500\_V1 SYSTEM V2.00.461  
Humidity:65.0%  
Test Distance:3.160m [K=1.0000]  
Remarks: LAMP:BXRV-DR-1830G-0600-B-23 Ra:90  
LENS:PM-1103C 50R+DIFFUSER  
DRIVER:9290 028 088 250mA  
30minutes warm-up

## CU AND LUMINAIRE BUDGETARY ESTIMATE DIAGRAM

Test:U:220.25V I:0.0487A P:10.315W PF:0.9587 Freq:49.99Hz Lamp Flux:814.298x1 lm		
NAME: 2218.511-ACOT-97-DW	TYPE:	WEIGHT:
SPEC.: 3000K	DIM.:	SERIAL No.: 2311161341
MFR.: RISE	SUR.: 0.001589625m2	Shielding Angle:

cc	80%			70%			50%			30%			10%			0
w	50%	30%	10%	50%	30%	10%	50%	30%	10%	50%	30%	10%	50%	30%	10%	0
fc	20%			20%			20%			20%			20%			0
RCR	RCR:Room Cavity Ratio															



C Range: 0 - 360DEG  
C Interval: 30.0DEG  
Test Speed: HIGH  
Temperature:25.3℃  
Operators:zoe  
Test Date:2023-11-16

Range: 0 - 180DEG  
Interval: 1.0DEG  
Test System:EVERFINE GO-SPEX500\_V1 SYSTEM V2.00.461  
Humidity:65.0%  
Test Distance:3.160m [K=1.0000]  
Remarks: LAMP:BXRV-DR-1830G-0600-B-23 Ra:90  
LENS:PM-1103C 50R+DIFFUSER  
DRIVER:9290 028 088 250mA  
30minutes warm-up

### WEC AND CCEC

Test:U:220.25V I:0.0487A P:10.315W PF:0.9587 Freq:49.99Hz Lamp Flux:814.298x1 lm		
NAME: 2218.511-ACOT-97-DW	TYPE:	WEIGHT:
SPEC.: 3000K	DIM.:	SERIAL No.: 2311161341
MFR.: RISE	SUR.: 0.001589625m2	Shielding Angle:

cc	80%			70%			50%			30%			10%			0
w	50%	30%	10%	50%	30%	10%	50%	30%	10%	50%	30%	10%	50%	30%	10%	0
fc	20%			20%			20%			20%			20%			0
RCR	RCR:Room Cavity Ratio						Wall Exitance Coefficients(WEC)									
0.0																
1.0	.106	.060	.019	.102	.058	.018	.095	.054	.017	.088	.051	.016	.082	.047	.015	
2.0	.101	.055	.017	.097	.054	.017	.091	.051	.016	.086	.048	.015	.080	.045	.014	
3.0	.095	.051	.015	.092	.049	.015	.087	.047	.014	.082	.045	.014	.078	.043	.013	
4.0	.090	.047	.014	.088	.046	.014	.083	.044	.013	.079	.042	.013	.075	.041	.012	
5.0	.085	.043	.013	.083	.043	.012	.079	.041	.012	.075	.040	.012	.072	.038	.012	
6.0	.081	.041	.012	.079	.040	.011	.076	.039	.011	.072	.038	.011	.069	.036	.011	
7.0	.077	.038	.011	.075	.038	.011	.072	.037	.011	.069	.036	.010	.067	.035	.010	
8.0	.073	.036	.010	.072	.035	.010	.069	.035	.010	.067	.034	.010	.064	.033	.010	
9.0	.070	.034	.009	.069	.034	.009	.066	.033	.009	.064	.032	.009	.062	.031	.009	
10.0	.067	.032	.009	.066	.032	.009	.064	.031	.009	.062	.031	.009	.060	.030	.009	

cc	80%			70%			50%			30%			10%			0
w	50%	30%	10%	50%	30%	10%	50%	30%	10%	50%	30%	10%	50%	30%	10%	0
fc	20%			20%			20%			20%			20%			0
RCR	RCR:Room Cavity Ratio			Ceiling Cavity Exitance Coefficients(CCEC)												
0.0	.111	.111	.111	.095	.095	.095	.065	.065	.065	.037	.037	.037	.012	.012	.012	
1.0	.100	.092	.084	.085	.079	.072	.058	.054	.050	.034	.031	.029	.011	.010	.009	
2.0	.091	.077	.065	.078	.066	.057	.053	.046	.039	.031	.027	.023	.010	.009	.008	
3.0	.084	.066	.052	.072	.057	.045	.049	.040	.032	.029	.023	.019	.009	.008	.006	
4.0	.078	.058	.042	.067	.050	.037	.046	.035	.026	.027	.020	.015	.009	.007	.005	
5.0	.073	.051	.035	.062	.044	.030	.043	.031	.021	.025	.018	.013	.008	.006	.004	
6.0	.068	.045	.029	.059	.039	.025	.040	.028	.018	.023	.016	.011	.008	.005	.004	
7.0	.064	.041	.025	.055	.035	.021	.038	.025	.015	.022	.015	.009	.007	.005	.003	
8.0	.061	.037	.021	.052	.032	.018	.036	.023	.013	.021	.013	.008	.007	.004	.003	
9.0	.058	.034	.018	.050	.030	.016	.034	.021	.011	.020	.012	.007	.007	.004	.002	
10.0	.055	.032	.016	.047	.027	.014	.033	.019	.010	.019	.011	.006	.006	.004	.002	

C Range: 0 - 360DEG  
C Interval: 30.0DEG  
Test Speed: HIGH  
Temperature:25.3℃  
Operators:zoe  
Test Date:2023-11-16

Range: 0 - 180DEG  
Interval: 1.0DEG  
Test System:EVERFINE GO-SPEX500\_V1 SYSTEM V2.00.461  
Humidity:65.0%  
Test Distance:3.160m [K=1.0000]  
Remarks: LAMP:BXRV-DR-1830G-0600-B-23 Ra:90  
LENS:PM-1103C 50R+DIFFUSER  
DRIVER:9290 028 088 250mA  
30minutes warm-up

## UGR(Unified Glare Rating) Table

Test:U:220.25V I:0.0487A P:10.315W PF:0.9587 Freq:49.99Hz Lamp Flux:814.298x1 lm										
NAME: 2218.511-ACOT-97-DW					TYPE:			WEIGHT:		
SPEC.: 3000K					DIM.:			SERIAL No.: 2311161341		
MFR.: RISE					SUR.: 0.001589625m2			Shielding Angle:		
ceiling/cavity	0.7	0.7	0.5	0.5	0.3	0.7	0.7	0.5	0.5	0.3
walls	0.5	0.3	0.5	0.3	0.3	0.5	0.3	0.5	0.3	0.3
working plane	0.2	0.2	0.2	0.2	0.2	0.2	0.2	0.2	0.2	0.2
Room dimensions	Viewed crosswise					Viewed endwise				
x = 2H y = 2H	19.7	20.6	19.9	20.8	21.0	20.0	20.9	20.2	21.1	21.2
3H	20.1	21.0	20.4	21.2	21.4	20.3	21.2	20.6	21.4	21.6
4H	20.3	21.1	20.6	21.3	21.6	20.5	21.3	20.7	21.5	21.7
6H	20.4	21.2	20.7	21.4	21.7	20.5	21.3	20.8	21.5	21.8
8H	20.4	21.2	20.7	21.4	21.7	20.5	21.2	20.8	21.5	21.7
12H	20.4	21.1	20.7	21.4	21.7	20.4	21.2	20.8	21.4	21.7
4H 2H	19.7	20.5	20.0	20.8	21.0	20.0	20.8	20.2	21.0	21.2
3H	20.3	21.0	20.6	21.3	21.6	20.5	21.2	20.8	21.5	21.7
4H	20.6	21.3	21.0	21.6	21.9	20.7	21.4	21.1	21.7	22.0
6H	20.8	21.4	21.2	21.7	22.1	20.8	21.4	21.2	21.7	22.1
8H	20.8	21.4	21.2	21.7	22.1	20.8	21.3	21.2	21.7	22.0
12H	20.8	21.3	21.2	21.7	22.1	20.8	21.2	21.2	21.6	22.0
8H 4H	20.6	21.2	21.0	21.5	21.9	20.7	21.3	21.1	21.6	22.0
6H	20.9	21.3	21.3	21.7	22.1	20.9	21.3	21.3	21.7	22.1
8H	20.9	21.3	21.4	21.7	22.2	20.9	21.3	21.3	21.7	22.1
12H	20.9	21.2	21.4	21.7	22.2	20.8	21.2	21.3	21.6	22.1
12H 4H	20.6	21.1	21.0	21.5	21.9	20.7	21.2	21.1	21.6	22.0
6H	20.9	21.3	21.3	21.7	22.1	20.9	21.2	21.3	21.7	22.1
8H	20.9	21.2	21.4	21.7	22.2	20.9	21.2	21.3	21.6	22.1
Variations with the observer position at spacings(CIE Pub.117):										
S = 1.0H	+ 1.5 / - 1.8					+ 1.7 / - 2.1				
1.5H	+ 2.8 / - 1.7					+ 3.2 / - 2.1				
2.0H	+ 2.0 / - 0.9					+ 2.6 / - 1.0				

CIE Pub.117, 814.3 lm Total Lamp Luminous Flux Correct (8log(F/F0) = -0.7)  
Area: 0.00158963 m2

C Range: 0 - 360DEG  
C Interval: 30.0DEG  
Test Speed: HIGH  
Temperature:25.3℃  
Operators:zoe  
Test Date:2023-11-16

Range: 0 - 180DEG  
Interval: 1.0DEG  
Test System:EVERFINE GO-SPEX500\_V1 SYSTEM V2.00.461  
Humidity:65.0%  
Test Distance:3.160m [K=1.0000]  
Remarks: LAMP:BXRV-DR-1830G-0600-B-23 Ra:90  
LENS:PM-1103C 50R+DIFFUSER  
DRIVER:9290 028 088 250mA  
30minutes warm-up



### UTILIZATION FACTORS TABLE

Test:U:220.25V I:0.0487A P:10.315W PF:0.9587 Freq:49.99Hz Lamp Flux:814.298x1 lm		
NAME: 2218.511-ACOT-97-DW	TYPE:	WEIGHT:
SPEC.: 3000K	DIM.:	SERIAL No.: 2311161341
MFR.: RISE	SUR.: 0.001589625m2	Shielding Angle:

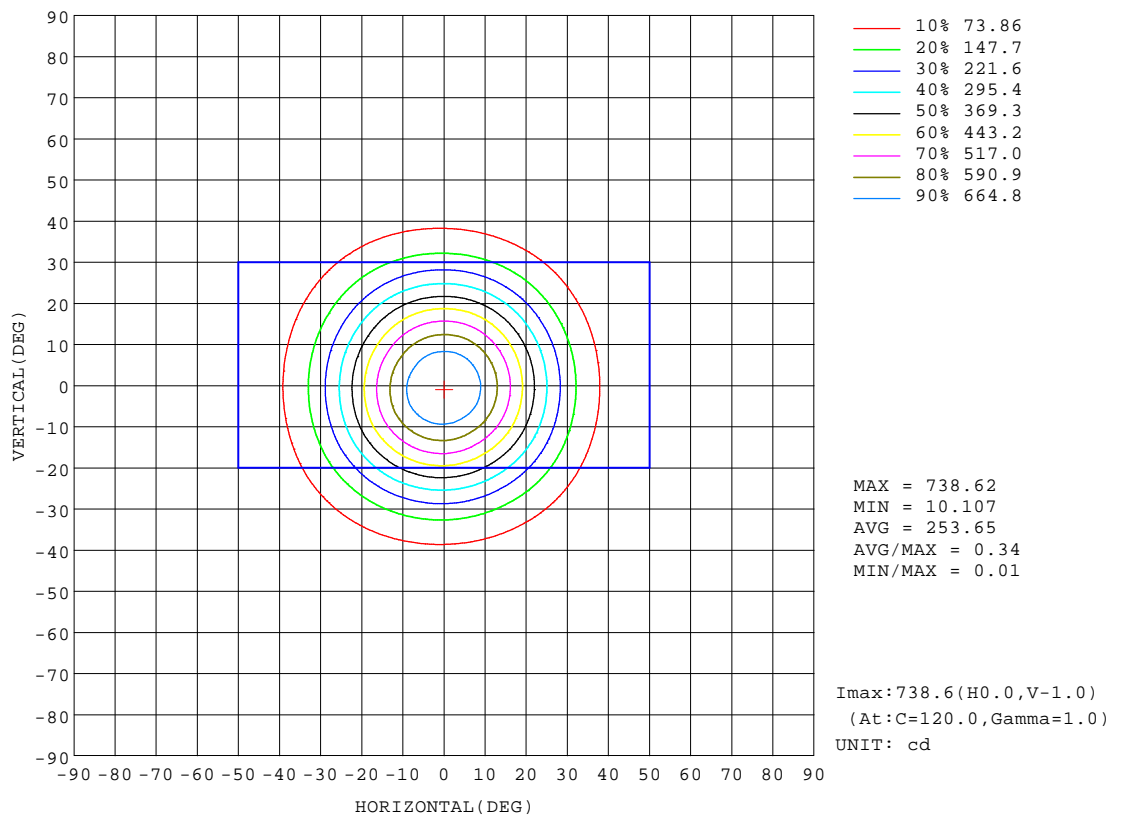
REFLECTANCE										
Ceiling	0.8	0.8	0.8	0.7	0.7	0.7	0.5	0.5	0.5	0
Walls	0.7	0.5	0.3	0.7	0.5	0.3	0.7	0.5	0.3	0
Working plane	0.2	0.2	0.2	0.2	0.2	0.2	0.2	0.2	0.2	0
ROOM INDEX	UTILIZATION FACTORS(PERCENT) $k(RI) \times RCR = 5$									
k = 0.60	49	46	43	49	45	43	49	45	43	41
0.80	54	50	48	54	50	48	53	50	48	45
1.00	57	53	51	56	53	51	55	53	50	48
1.25	59	56	54	59	56	53	57	55	53	50
1.50	61	58	56	60	57	55	59	57	55	52
2.00	63	60	58	62	59	58	60	58	57	53
2.50	64	61	59	63	61	59	61	59	58	54
3.00	65	63	61	64	62	60	62	60	59	55
4.00	66	64	63	65	63	62	63	61	60	56
5.00	67	65	64	65	64	63	63	62	61	57
ROOM INDEX	UF(total)									Direct
According to DIN EN 13032-2 2004			Suspended					SHRNOM = 1.25		

C Range: 0 - 360DEG  
C Interval: 30.0DEG  
Test Speed: HIGH  
Temperature:25.3℃  
Operators:zoe  
Test Date:2023-11-16

Range: 0 - 180DEG  
Interval: 1.0DEG  
Test System:EVERFINE GO-SPEX500\_V1 SYSTEM V2.00.461  
Humidity:65.0%  
Test Distance:3.160m [K=1.0000]  
Remarks: LAMP:BXRV-DR-1830G-0600-B-23 Ra:90  
LENS:PM-1103C 50R+DIFFUSER  
DRIVER:9290 028 088 250mA  
30minutes warm-up

## ISOCANDELA DIAGRAM

Test:U:220.25V I:0.0487A P:10.315W PF:0.9587 Freq:49.99Hz Lamp Flux:814.298x1 lm		
NAME: 2218.511-ACOT-97-DW	TYPE:	WEIGHT:
SPEC.: 3000K	DIM.:	SERIAL No.: 2311161341
MFR.: RISE	SUR.: 0.001589625m2	Shielding Angle:

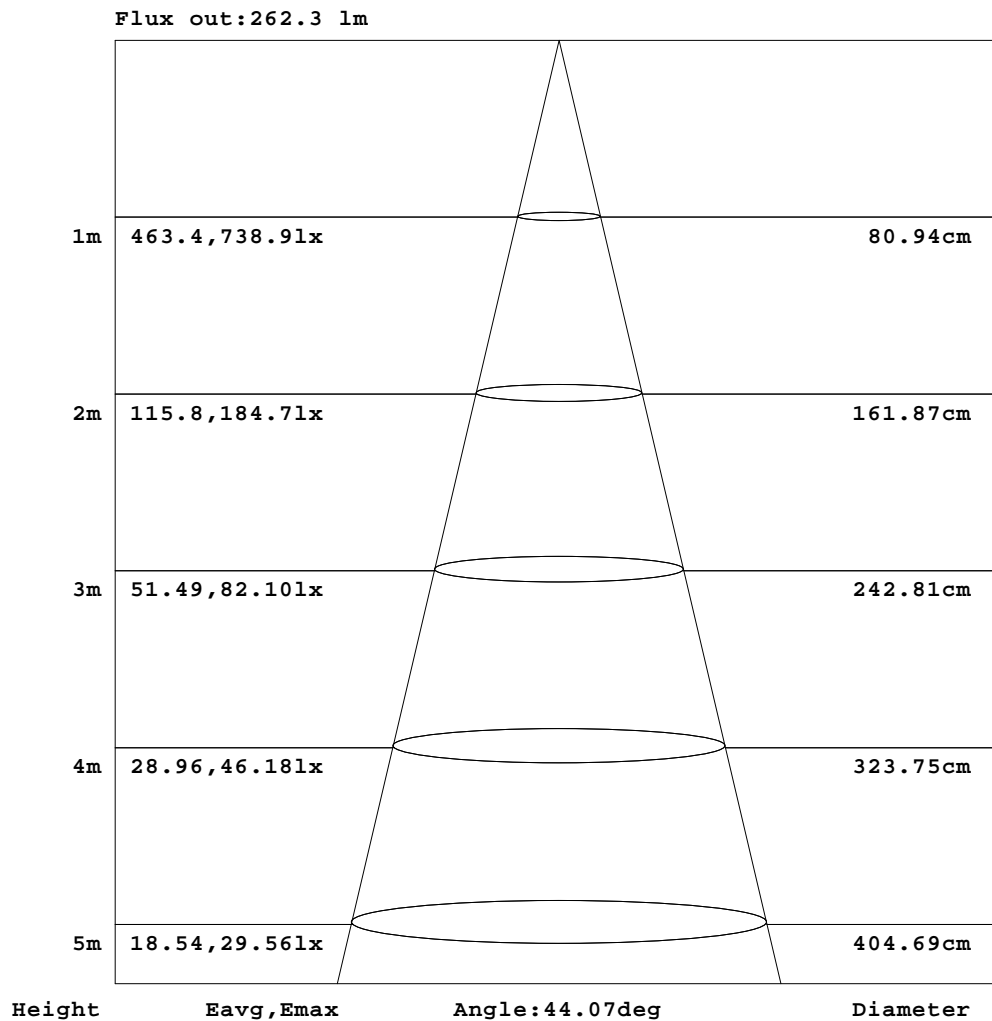


C Range: 0 - 360DEG  
C Interval: 30.0DEG  
Test Speed: HIGH  
Temperature: 25.3 °C  
Operators: zoe  
Test Date: 2023-11-16

Range: 0 - 180DEG  
Interval: 1.0DEG  
Test System: EVERFINE GO-SPEX500\_V1 SYSTEM V2.00.461  
Humidity: 65.0%  
Test Distance: 3.160m [K=1.0000]  
Remarks: LAMP: BXR-V-DR-1830G-0600-B-23 Ra: 90  
LENS: PM-1103C 50R+DIFFUSER  
DRIVER: 9290 028 088 250mA  
30minutes warm-up

## AAI Figure

Test:U:220.25V I:0.0487A P:10.315W PF:0.9587 Freq:49.99Hz Lamp Flux:814.298x1 lm		
NAME: 2218.511-ACOT-97-DW	TYPE:	WEIGHT:
SPEC.: 3000K	DIM.:	SERIAL No.: 2311161341
MFR.: RISE	SUR.: 0.001589625m2	Shielding Angle:



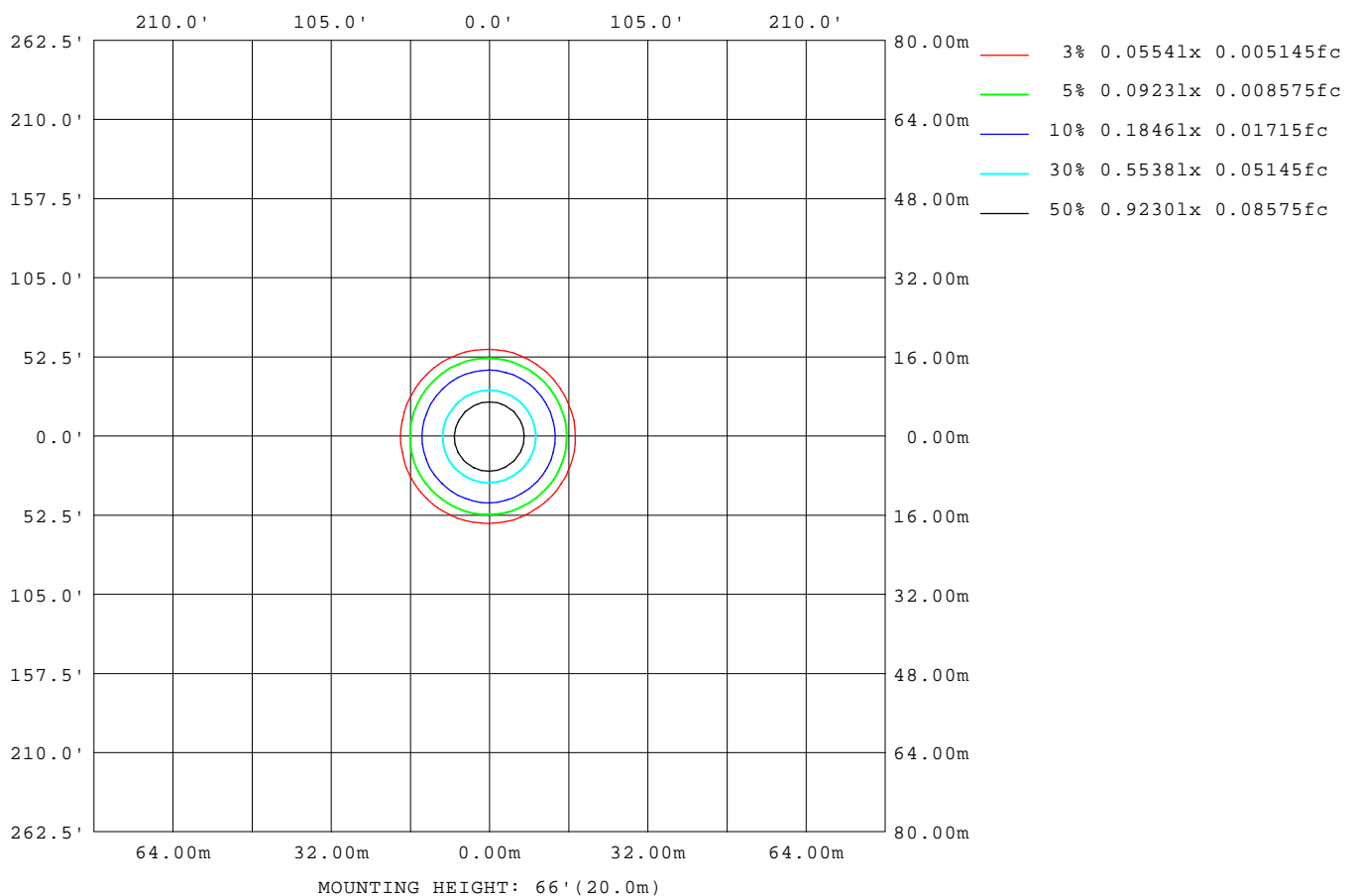
Note:The Curves indicate the illuminated area and the average illumination when the luminaire is at different distance.

C Range: 0 - 360DEG  
C Interval: 30.0DEG  
Test Speed: HIGH  
Temperature:25.3℃  
Operators:zoe  
Test Date:2023-11-16

Range: 0 - 180DEG  
Interval: 1.0DEG  
Test System:EVERFINE GO-SPEX500\_V1 SYSTEM V2.00.461  
Humidity:65.0%  
Test Distance:3.160m [K=1.0000]  
Remarks: LAMP:BXRV-DR-1830G-0600-B-23 Ra:90  
LENS:PM-1103C 50R+DIFFUSER  
DRIVER:9290 028 088 250mA  
30minutes warm-up

## ISOLUX DIAGRAM

Test:U:220.25V I:0.0487A P:10.315W PF:0.9587 Freq:49.99Hz Lamp Flux:814.298x1 lm		
NAME: 2218.511-ACOT-97-DW	TYPE:	WEIGHT:
SPEC.: 3000K	DIM.:	SERIAL No.: 2311161341
MFR.: RISE	SUR.: 0.001589625m2	Shielding Angle:



C Range: 0 - 360DEG  
C Interval: 30.0DEG  
Test Speed: HIGH  
Temperature:25.3℃  
Operators:zoe  
Test Date:2023-11-16

Range: 0 - 180DEG  
Interval: 1.0DEG  
Test System:EVERFINE GO-SPEX500\_V1 SYSTEM V2.00.461  
Humidity:65.0%  
Test Distance:3.160m [K=1.0000]  
Remarks: LAMP:BXRV-DR-1830G-0600-B-23 Ra:90  
LENS:PM-1103C 50R+DIFFUSER  
DRIVER:9290 028 088 250mA  
30minutes warm-up

## LED Avg.L Report

Test:U:220.25V I:0.0487A P:10.315W PF:0.9587 Freq:49.99Hz Lamp Flux:814.298x1 lm		
NAME: 2218.511-ACOT-97-DW	TYPE:	WEIGHT:
SPEC.: 3000K	DIM.:	SERIAL No.: 2311161341
MFR.: RISE	SUR.: 0.001589625m2	Shielding Angle:

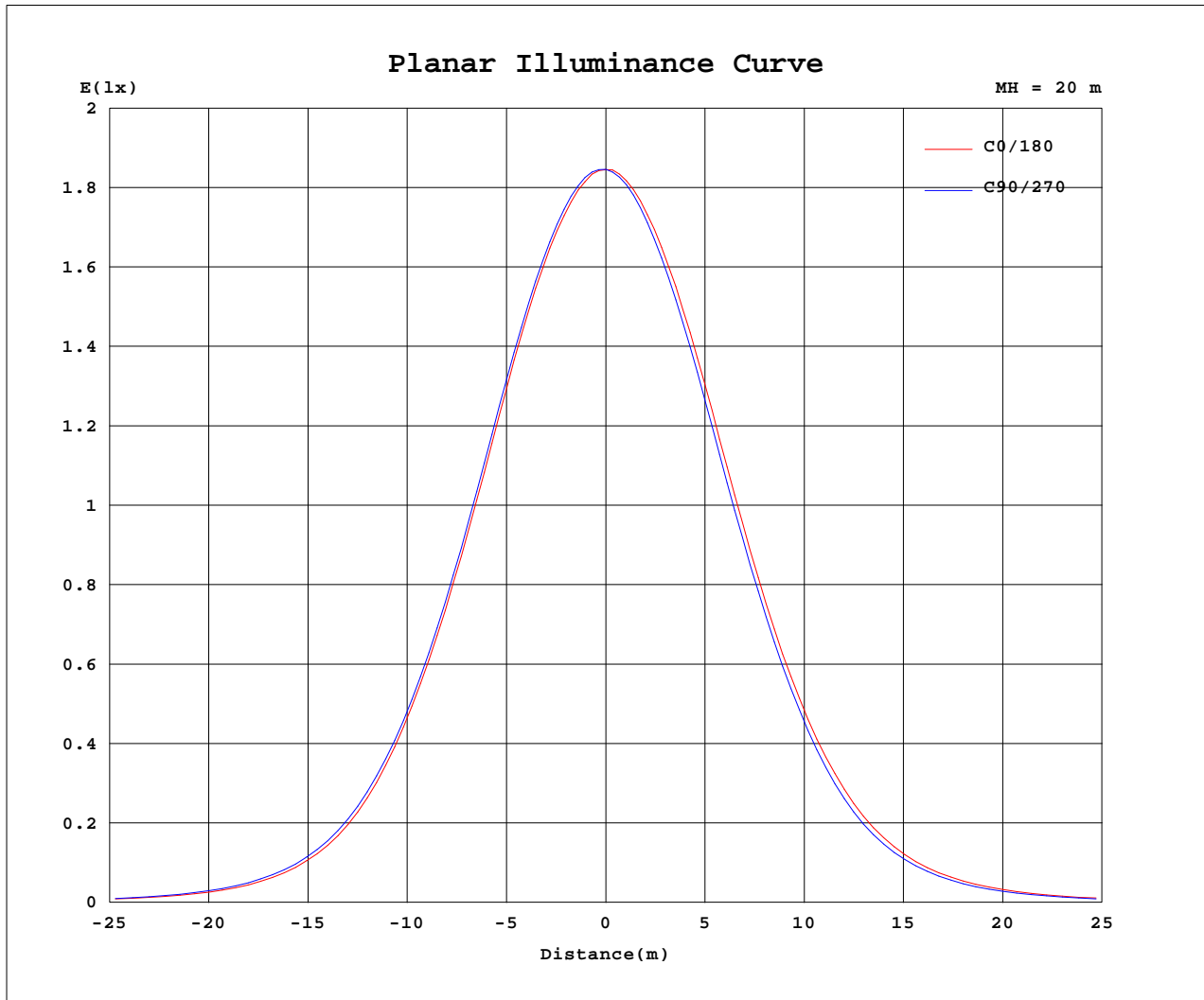
AvgL	cd/m2
L_0~180(65)av	11545
L_0~180(75)av	10424
L_0~180(85)av	3095
L_90~270(65)av	11424
L_90~270(75)av	9825
L_90~270(85)av	3701
L_45(65)av	11477
L_45(75)av	10109
L_45(85)av	3331

Standard: GB/T 29293-2012

C Range: 0 - 360DEG  
C Interval: 30.0DEG  
Test Speed: HIGH  
Temperature:25.3℃  
Operators:zoe  
Test Date:2023-11-16

Range: 0 - 180DEG  
Interval: 1.0DEG  
Test System:EVERFINE GO-SPEX500\_V1 SYSTEM V2.00.461  
Humidity:65.0%  
Test Distance:3.160m [K=1.0000]  
Remarks: LAMP:BXRV-DR-1830G-0600-B-23 Ra:90  
LENS:PM-1103C 50R+DIFFUSER  
DRIVER:9290 028 088 250mA  
30minutes warm-up

## Planar Illuminance Curve



C Range: 0 - 360DEG  
 C Interval: 30.0DEG  
 Test Speed: HIGH  
 Temperature: 25.3 °C  
 Operators: zoe  
 Test Date: 2023-11-16

Range: 0 - 180DEG  
 Interval: 1.0DEG  
 Test System: EVERFINE GO-SPEX500\_V1 SYSTEM V2.00.461  
 Humidity: 65.0%  
 Test Distance: 3.160m [K=1.0000]  
 Remarks: LAMP: BXR-V-DR-1830G-0600-B-23 Ra: 90  
 LENS: PM-1103C 50R+DIFFUSER  
 DRIVER: 9290 028 088 250mA  
 30minutes warm-up

## LUMINOUS DISTRIBUTION INTENSITY DATA

Test:U:220.25V I:0.0487A P:10.315W PF:0.9587 Freq:49.99Hz Lamp Flux:814.298x1 lm		
NAME: 2218.511-ACOT-97-DW	TYPE:	WEIGHT:
SPEC.: 3000K	DIM.:	SERIAL No.: 2311161341
MFR.: RISE	SUR.: 0.001589625m2	Shielding Angle:

Table--1

UNIT: cd

C(DEC) (DEC)	0	30	60	90	120	150	180	210	240	270	300	330						
0	739	739	739	739	739	739	739	739	739	739	739	739						
5	714	717	717	720	720	719	715	710	709	708	710	711						
10	648	651	650	655	658	657	650	639	636	636	640	643						
15	545	548	547	555	560	560	550	537	534	532	536	539						
20	421	423	423	431	437	438	428	416	413	410	413	415						
25	297	299	298	306	312	313	306	296	294	290	290	291						
30	186	189	189	197	201	204	200	193	190	184	183	182						
35	105	108	108	114	117	121	119	114	112	107	104	102						
40	56.5	58.1	59.1	62.6	65.1	67.4	67.0	64.5	62.5	59.4	56.6	54.9						
45	30.1	31.4	32.1	34.0	35.4	37.0	37.2	35.8	34.5	32.3	30.5	29.5						
50	16.7	17.3	17.8	18.9	19.5	20.4	20.6	19.6	18.9	17.5	16.7	16.3						
55	11.0	11.2	11.3	11.7	12.0	12.3	12.2	11.8	11.4	11.1	10.9	10.7						
60	8.71	8.78	8.83	8.98	9.13	9.23	9.14	8.93	8.81	8.70	8.67	8.65						
65	7.51	7.59	7.62	7.77	7.93	8.06	8.01	7.81	7.69	7.58	7.52	7.47						
70	5.88	5.86	5.73	5.79	6.02	6.33	6.50	6.43	6.24	6.06	5.94	5.87						
75	4.12	3.87	3.64	3.66	3.86	4.18	4.45	4.61	4.59	4.42	4.31	4.22						
80	2.19	1.88	1.62	1.60	1.76	2.08	2.40	2.64	2.84	2.82	2.70	2.50						
85	0.37	0.17	0.07	0.04	0.07	0.23	0.49	0.75	0.95	0.98	0.86	0.60						
90	0.00	0.00	0.00	0.00	0.00	0.00	0.00	0.00	0.00	0.00	0.00	0.00						
95	0.00	0.00	0.00	0.00	0.00	0.00	0.00	0.00	0.00	0.00	0.00	0.00						
100	0.00	0.00	0.00	0.00	0.00	0.00	0.00	0.00	0.00	0.00	0.00	0.00						
105	0.00	0.00	0.00	0.00	0.00	0.00	0.00	0.00	0.00	0.00	0.00	0.00						
110	0.00	0.00	0.00	0.00	0.00	0.00	0.00	0.00	0.00	0.00	0.00	0.00						
115	0.00	0.00	0.00	0.00	0.00	0.00	0.00	0.00	0.00	0.00	0.00	0.00						
120	0.00	0.00	0.00	0.00	0.00	0.00	0.00	0.00	0.00	0.00	0.00	0.00						
125	0.00	0.00	0.00	0.00	0.00	0.00	0.00	0.00	0.00	0.00	0.00	0.00						
130	0.00	0.00	0.00	0.00	0.00	0.00	0.00	0.00	0.00	0.00	0.00	0.00						
135	0.00	0.00	0.00	0.00	0.00	0.00	0.00	0.00	0.00	0.00	0.00	0.00						
140	0.00	0.00	0.00	0.00	0.00	0.00	0.00	0.00	0.00	0.00	0.00	0.00						
145	0.00	0.00	0.00	0.00	0.00	0.00	0.00	0.00	0.00	0.00	0.00	0.00						
150	0.00	0.00	0.00	0.00	0.00	0.00	0.00	0.00	0.00	0.00	0.00	0.00						
155	0.00	0.00	0.00	0.00	0.00	0.00	0.00	0.00	0.00	0.00	0.00	0.00						
160	0.00	0.00	0.00	0.00	0.00	0.00	0.00	0.00	0.00	0.00	0.00	0.00						
165	0.00	0.00	0.00	0.00	0.00	0.00	0.00	0.00	0.00	0.00	0.00	0.00						
170	0.00	0.00	0.00	0.00	0.00	0.00	0.00	0.00	0.00	0.00	0.00	0.00						
175	0.00	0.00	0.00	0.00	0.00	0.00	0.00	0.00	0.00	0.00	0.00	0.00						
180	0.00	0.00	0.00	0.00	0.00	0.00	0.00	0.00	0.00	0.00	0.00	0.00						

C Range: 0 - 360DEG  
C Interval: 30.0DEG  
Test Speed: HIGH  
Temperature:25.3℃  
Operators:zoe  
Test Date:2023-11-16

Range: 0 - 180DEG  
Interval: 1.0DEG  
Test System:EVERFINE GO-SPEX500\_V1 SYSTEM V2.00.461  
Humidity:65.0%  
Test Distance:3.160m [K=1.0000]  
Remarks: LAMP:BXR-V-DR-1830G-0600-B-23 Ra:90  
LENS:PM-1103C 50R+DIFFUSER  
DRIVER:9290 028 088 250mA  
30minutes warm-up